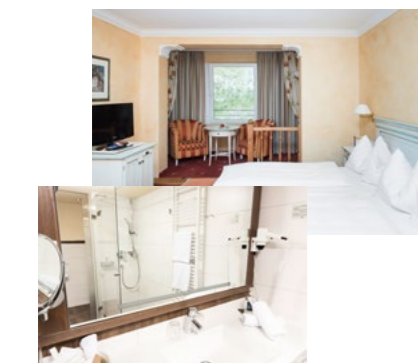


PRICES 2018/19

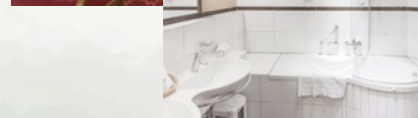
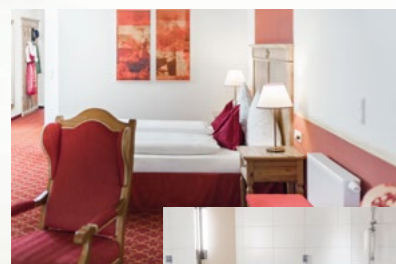
Stammhaus

Get close to the forest in these small and cosy rooms which suit both singles and couples.



Ansitz

The large one- and three-bedroom suites with stunning views over Fuschlsee have the following options for families. No dogs allowed!

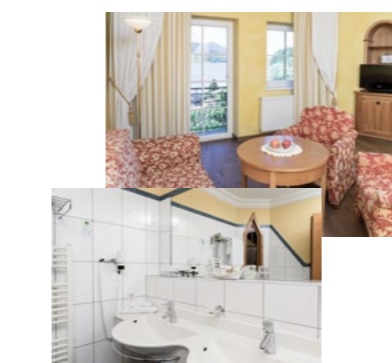
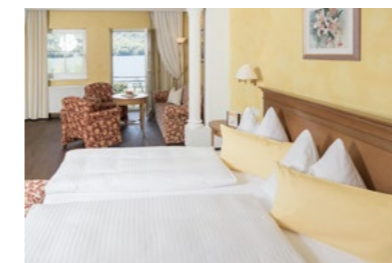


		From 7 nights	Sun-Fri	Fri-Sun holidays
Ellmaustein Single room with conservatory, located at side, approx. 20 m ²		172,-	182,-	192,-
		161,-	169,-	178,-
		150,-	159,-	167,-
Fuschlsee Single suit, approx. 30 m ² , on the lake side, wooden floor, queen bed, balcony, spa steam shower, tea set		209,-	220,-	232,-
		195,-	205,-	215,-
		182,-	191,-	201,-
Gartenzimmer Junior suite, approx. 40 m ² , side situated, terrace		172,-	182,-	192,-
		161,-	169,-	178,-
		150,-	159,-	167,-
Plomberg Double room, approx. 27-30 m ² , laterally located, balcony or conservatory		147,-	156,-	164,-
		137,-	145,-	153,-
		128,-	135,-	142,-
Filbling Stammhaus Double room, approx. 30 m ² , on the lake side, renovated in 2013, wooden floor, separate toilet, bathroom with shower, balcony or terrace		165,-	174,-	182,-
		154,-	162,-	170,-
		144,-	152,-	159,-
Schafberg Stammhaus Junior suite, approx. 40 m ² , on the lake side, wooden floor, separate toilet, balcony		172,-	182,-	192,-
		161,-	169,-	178,-
		150,-	159,-	167,-
Wartenfels 2-room suite, approx. 46 m ² , on the lake side, wood and carpeting, separate toilet, 2 balconies, garage		191,-	203,-	213,-
		178,-	188,-	197,-
		166,-	174,-	184,-

		From 7 nights	Sun-Fri	Fri-Sun holidays
Schafberg Ansitz Junior suite, approx. 57 m ² , with fireplace, on the lake side, toilet with bidet separately, balcony, wood and carpeting		187,-	198,-	208,-
		172,-	183,-	193,-
		163,-	170,-	185,-
2-room Osterhorn suite On the lake side on 2 floors, approx. 80 m ² , fireplace, toilet with bidet separately, roof terrace facing the forest, tea set and Nespresso machine, garage		221,-	233,-	247,-
		205,-	216,-	227,-
		186,-	195,-	202,-
3-room Osterhorn suite 2 floors, approx. 105 m ² , the same equipment as 2-room-Osterhorn with additional bedroom, tea set and Nespresso machine, garage		239,-	251,-	262,-
		220,-	232,-	246,-
		202,-	210,-	217,-
2-room Ansitz suite Approx. 84 m ² , on the lake side with loggia, fireplace, toilet with bidet separately, wood and carpeting, tea set and Nespresso machine, garage		227,-	240,-	254,-
		211,-	222,-	234,-
		196,-	206,-	216,-
3-room Ansitz suite Approx. 100 m ² , equipment as 2-room Ansitz suite with additional bedroom and bathroom, wood and carpeting, tea set and Nespresso machine, garage		261,-	274,-	290,-
		243,-	255,-	267,-
		222,-	238,-	247,-

Villa + Gütl

Featuring new carpets, cherry wood and warm yellow, blue and grey tones, Villa offers different room units from single rooms to two-room suite.



		From 7 nights	Sun-Fri	Fri-Sun holidays
Sulzberg Single room, approx. 26 m ² , with a balcony or French balcony, south location		180,-	190,-	200,-
		166,-	177,-	187,-
		156,-	164,-	172,-
Filbling Villa Double room, approx. 30 m ² , side or lake side, French balcony		158,-	166,-	175,-
		146,-	155,-	163,-
		137,-	145,-	153,-
Schafberg Villa Junior suite, approx. 45 m ² , on the lake side, separate toilet, balcony or terrace		180,-	190,-	200,-
		166,-	177,-	187,-
		156,-	164,-	172,-
Drachenwand 2-room suite, approx. 45 m ² , with 2 balconies, located south, separate toilet		180,-	190,-	200,-
		166,-	177,-	187,-
		156,-	164,-	172,-
Turm suite 2-room suite, approx. 50 m ² , on the lake side, separate toilet, balcony		204,-	216,-	228,-
		191,-	202,-	212,-
		180,-	189,-	199,-
Zwölferhorn suite 2-room suite, approx. 60 m ² , on the lake side with a balcony or terrace, bath and shower, separate toilet, tea set and Nespresso machine, garage		223,-	235,-	251,-
		208,-	219,-	230,-
		192,-	203,-	213,-
Gütl suite 3-room suite, 2 bedrooms, approx. 80 m ² , living room, fireplace, balcony at lake side, bath and shower, separate toilet, tea set and Nespresso machine, garage		253,-	268,-	285,-
		236,-	249,-	262,-
		218,-	232,-	244,-

KEY

Stammhaus, Ansitz, Villa & Gütl

High season

8.7.2018 - 1.9.2018
21.12.2018 - 5.1.2019

Low season

29.3.2018 - 17.5.2018
3.6.2018 - 23.6.2018
9.9.2018 - 24.10.2018
4.11.2018 - 20.12.2018
6.1.2019 - 10.3.2019

Mid season

18.5.2018 - 2.6.2018
24.6.2018 - 7.7.2018
2.9.2018 - 8.9.2018
25.10.2018 - 3.11.2018

Company holiday 26.2.2018 - 28.3.2018

GOURMET PACKAGE

Included services for Stammhaus-, Ansitz-, Villa- & Gütl-guests

Eat & drink

- Welcome drink
- Breakfast buffet until 11.30 am
- Lunch-Snack-Buffer, cake and 'Jausen' buffet in afternoon from 1-4.30 pm
- 6 course dinner
- Weekly Hüttenabend

Spa & wellness

- Year-round heated indoor and outdoor pools
- Weekly herbal workshops
- Herb walks

Room

- Fluffy bathrobes, towels and slippers
- Hiking rucksack, umbrella

Entertainment

- Musical evenings several nights per week
- Jewellery exhibitions and fashion shows

Golf

- Discounted 9-hole-green fee and daily green fee
- Golf carts for Waldhof Alm
- Weekly golf course

Sport & active

- Fitness centre
- Active program with Fitness coach
- Tennis court and gymnasium
- Archery range with 3-D course integration
- Mountain bikes and

Kids & family

- Children's programme and care for over 3 years (5 days per week)
- Big playground
- Room monitor in every room possible
- Waldhof Winter World

CHILDREN

Child prices (incl. children's package)

In additional bed or in crib

0-1 years 15,-
2-5 years 43,-
6-9 years 54,-
10-13 years 63,-
from 14 years - 40%

in their own bedroom - in the Ansitz, Osterhorn- and Gütl suites

0-1 years 15,-
2-5 years 63,-
6-9 years 75,-
10-13 years 114,-
from 14 years 158,-

Stammhaus, Villa, Ansitz, Gütl: All our rooms and suites of course include a bath or shower, toilet, hairdryer, mini-bar, safe, telephone, radio and TV as well as free Wi-Fi as standard.

Prices: For double room with single occupancy on request. All prices (excluding local taxes) are in Euro per person per night including gourmet package. The sketches of rooms shown are non-binding. All previous prices are hereby invalid. For more information about reservation, please contact: +43 6226 82 64 or visit www.ebners-waldhof.at.

Arrival and departure: Check-in from 3 pm and check-out by 11 am. A later departure can be arranged with the reception at an additional cost.

Reservation: Your room reservation is confirmed after a written confirmation and a deposit. In the case of late arrival guests are required to settle directly at check-in.

Cancellation: Cancellation Policy find in the conditions on www.wko.at.

Making payments: You can pay us either in cash, with your debit or credit card (Visa, MasterCard/Euro Card) or via advance payment to our account of Raiffeisen Bank Hof

Account number: 032615
BLZ: 35025
IBAN: AT63 3502 5000 0003 2615
BIC: RVSAAT25025, BLZ: 35025