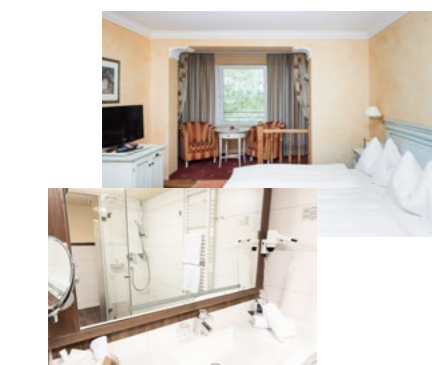
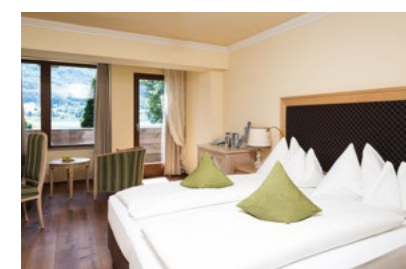


# PRICES 2019/20



## Stammhaus

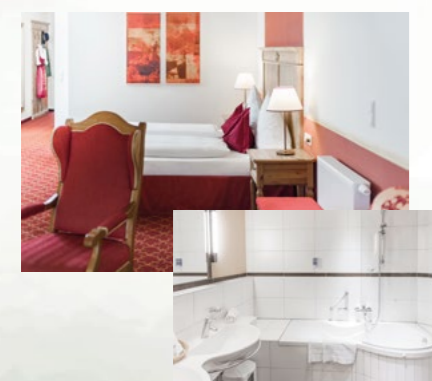
Get close to the forest in these small and cosy rooms which suit both singles and couples.



		From 7 nights	Sun-Fri	Fri-Sun holidays
<b>Ellmaustein</b> Single room with conservatory, located at side, approx. 20 m <sup>2</sup>		176,-	187,-	197,-
		156,-	165,-	174,-
<b>Fuschlsee</b> Single suit, approx. 30 m <sup>2</sup> , on the lake side, wooden floor, queen bed, balcony, spa steam shower, tea set		214,-	226,-	238,-
		189,-	198,-	208,-
<b>Gartenzimmer</b> Junior suite, approx. 40 m <sup>2</sup> , side situated, terrace		176,-	187,-	197,-
		156,-	165,-	174,-
<b>Plomberg</b> Double room, approx. 27-30 m <sup>2</sup> , laterally located, balcony or conservatory		151,-	160,-	168,-
		134,-	141,-	149,-
<b>Filbling Stammhaus</b> Double room, approx. 30 m <sup>2</sup> , on the lake side, renovated in 2013, wooden floor, separate toilet, bathroom with shower, balcony or terrace		169,-	178,-	187,-
		151,-	159,-	167,-
<b>Schafberg Stammhaus</b> Junior suite, approx. 40 m <sup>2</sup> , on the lake side, wooden floor, separate toilet, balcony		176,-	187,-	197,-
		156,-	165,-	174,-
<b>Wartenfels</b> 2-room suite, approx. 46 m <sup>2</sup> , on the lake side, wood and carpeting, separate toilet, 2 balconies, garage		195,-	207,-	217,-
		169,-	179,-	189,-

## Anstiz

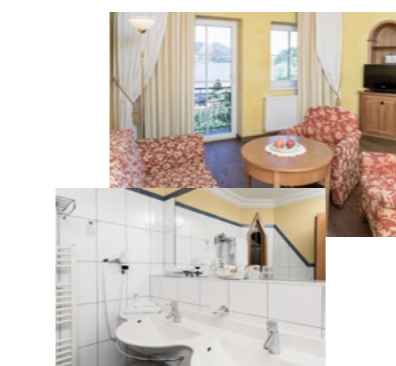
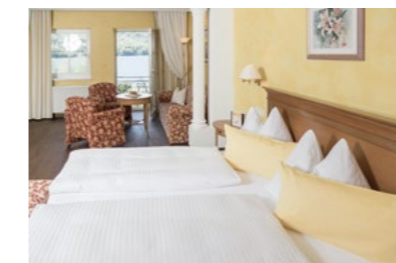
The large one- and three-bedroom suites with stunning views over Fuschlsee have the following options for families. No dogs allowed!



		From 7 nights	Sun-Fri	Fri-Sun holidays
<b>Schafberg Anstiz</b> Junior suite, approx. 57 m <sup>2</sup> , with fireplace, on the lake side, toilet with bidet separately, balcony, wood and carpeting		192,-	203,-	213,-
		169,-	178,-	191,-
<b>2-room Osterhorn suite</b> On the lake side on 2 floors, approx. 80 m <sup>2</sup> , fireplace, toilet with bidet separately, roof terrace facing the forest, tea set and Nespresso machine, garage		225,-	238,-	252,-
		189,-	198,-	205,-
<b>3-room Osterhorn suite</b> 2 floors, approx. 105 m <sup>2</sup> , the same equipment as 2-room-Osterhorn with additional bedroom, tea set and Nespresso machine, garage		244,-	256,-	267,-
		205,-	213,-	220,-
<b>2-room Anstiz suite</b> Approx. 84 m <sup>2</sup> , on the lake side with loggia, fireplace, toilet with bidet separately, wood and carpeting, tea set and Nespresso machine, garage		233,-	246,-	260,-
		202,-	212,-	226,-
<b>3-room Anstiz suite</b> Approx. 100 m <sup>2</sup> , equipment as 2-room Anstiz suite with additional bedroom and bathroom, wood and carpeting, tea set and Nespresso machine, garage		268,-	281,-	297,-
		229,-	245,-	257,-

## Villa + Gütl

Featuring new carpets, cherry wood and warm yellow, blue and grey tones, Villa offers different room units from single rooms to two-room suite.



		From 7 nights	Sun-Fri	Fri-Sun holidays
<b>Sulzberg</b> Single room, approx. 26 m <sup>2</sup> , with a balcony or French balcony, south location		185,-	195,-	205,-
		165,-	173,-	182,-
<b>Filbling Villa</b> Double room, approx. 30 m <sup>2</sup> , side or lake side, French balcony		169,-	178,-	187,-
		151,-	159,-	167,-
<b>Schafberg Villa</b> Junior suite, approx. 45 m <sup>2</sup> , on the lake side, separate toilet, balcony or terrace		185,-	195,-	205,-
		165,-	173,-	182,-
<b>Drachenwand</b> 2-room suite, approx. 45 m <sup>2</sup> , with 2 balconies, located south, separate toilet		185,-	195,-	205,-
		165,-	173,-	182,-
<b>Turm suite</b> 2-room suite, approx. 50 m <sup>2</sup> , on the lake side, separate toilet, balcony		209,-	221,-	234,-
		186,-	196,-	206,-
<b>Zwölferhorn suite</b> 2-room suite, approx. 60 m <sup>2</sup> , on the lake side with a balcony or terrace, bath and shower, separate toilet, tea set and Nespresso machine, garage		229,-	241,-	257,-
		197,-	209,-	219,-
<b>Gütl suite</b> 3-room suite, 2 bedrooms, approx. 80 m <sup>2</sup> , living room, fireplace, balcony at lake side, bath and shower, separate toilet, tea set and Nespresso machine, garage		259,-	275,-	292,-
		224,-	238,-	252,-

### KEY

#### Stammhaus, Anstiz, Villa & Gütl

##### Peak season

7.7.2019 - 31.8.2019  
20.12.2019 - 5.1.2020

##### Low season

11.4.2019 - 6.7.2019  
1.9.2019 - 19.12.2019  
6.1.2020 - 8.3.2020

**Company holiday**  
9.3.2020 - 9.4.2020

### GOURMET PACKAGE

#### Included services for Stammhaus-, Anstiz-, Villa- & Gütl-guests

##### Eat & drink

- welcome drink
- late risers' breakfast buffet until 11.30 am
- lunch snack and afternoon cake buffet
- different 6-course-dinner every day
- hearty cottage evening at the Waldhof Alm

##### Spa & wellness

- year-round heated indoor and outdoor pools
- weekly herbs workshops

- herbs walks
- sauna infusions with house-made hydrolates

##### Rooms

- free wifi
- bathrobes, bath towels, slippers
- minibar, safe

##### Golf

- driving range, chipping and putting green, PAR 3 training course
- weekly golf taster course

- green fee discount on „Golf & Seen“-golf courses

##### Sports & active

- fitness gallery with lake panorama
- active program with fitness coach
- tennis court, gymnasium
- 3D-archery course
- Mountain bikes and e-bikes
- rowing boats, kayaks and SUPs
- snow-shoes, snow-bikes, toboggans

##### Entertainment

- classical music evenings
- jewellery exhibitions and fashion shows

##### Kids & family

- kid's program and child care (5 days/week)
- Waldhof Winter World
- adventure playground with tubing
- baby-service possible

### CHILDREN

#### Child prices (incl. children's package)

In additional bed or  
in crib

0-1 years 17,-  
2-5 years 45,-  
6-9 years 56,-  
10-13 years 65,-  
from 14 years - 40%

in their own bedroom - in the  
Anstiz, Osterhorn- and Gütl suites

0-1 years 17,-  
2-5 years 65,-  
6-9 years 77,-  
10-13 years 116,-  
from 14 years 159,-

**Stammhaus, Villa, Anstiz, Gütl:** All our rooms and suites of course include a bath or shower, toilet, hairdryer, minibar, safe, telephone, radio and TV as well as free wifi as standard.

**Prices:** For double room with single occupancy on request. All prices (excluding local taxes) are in Euro per person per night including gourmet package. The sketches of rooms shown are non-binding. All previous prices are hereby invalid. For more information about reservation, please contact: +43 6226 82 64 or visit [www.ebners-waldhof.at](http://www.ebners-waldhof.at).

**Arrival and departure:** Check-in from 3 pm and check-out by 11 am. A later departure can be arranged with the reception at an additional cost.

**Reservation:** Your room reservation is confirmed after a written confirmation and a deposit. In the case of late arrival guests are required to settle directly at check-in.

**Cancellation:** Cancellation Policy find in the conditions on [www.wko.at](http://www.wko.at).

**Making payments:** You can pay us either in cash, with your debit or credit card (Visa, Master Card/Euro Card) or via advance payment to our account of Raiffeisen Bank Hof

Account number: 032615  
BLZ: 35025  
IBAN: AT63 3502 5000 0003 2615  
BIC: RVSAAT25025, BLZ: 35025